

PHASING NOTES

GENERAL
- CONTRACTOR TO MAINTAIN EMERGENCY EGRESS FROM EXISTING BUILDINGS.

PHASE 1A 1 MAY 2017 - 25 JUNE 2017
- CONSTRUCTION ENTRANCE AT EAST ACCESS ROAD
- PRELIMINARY GARTHWORK AND GRADING
- BUILD NEW MADRONA SCHOOL
- TEMPORARY FENCED PLAY AREA TO NORTH OF EXISTING SCHOOL

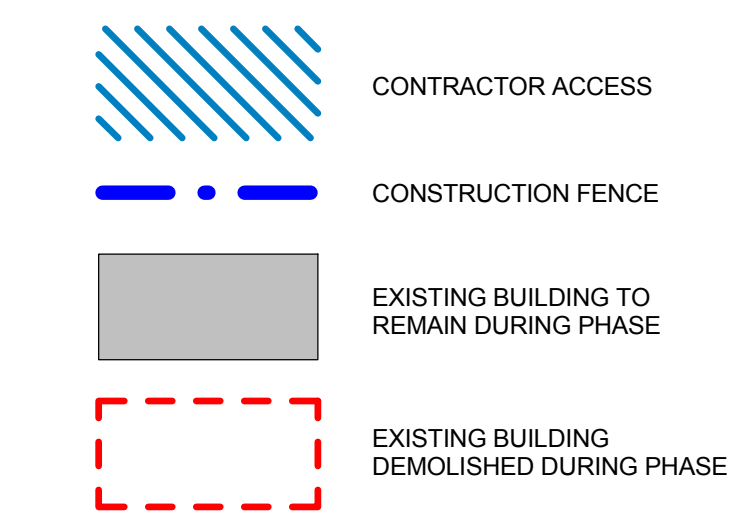
PHASE 1B 26 JUNE 2017 - 27 AUGUST 2017
- CONSTRUCTION ENTRANCE AT EXISTING SERVICE YARD
- DEMOLITION OF EXISTING TECH ROOM
- UTILITY WORK AND CONSTRUCTION OF ATB DRIVE AT EAST ACCESS ROAD
- EARTHWORK AND GRADING, BUILD NEW MADRONA SCHOOL

PHASE 2 28 AUGUST 2017 - 24 JUNE 2018
- CONSTRUCTION ENTRANCE AT EAST ACCESS ROAD
- CONTRACTOR PARKING AT NORTH TRACK AREA, STAGING/STORAGE ON SOUTH TRACK AREA
- BUILD NEW MADRONA SCHOOL
- TEMPORARY FENCED PLAY AREA TO NORTH OF EXISTING SCHOOL

PHASE 3A 25 JUNE 2018 - AUGUST 2018
- COMPLETE NEW MADRONA SCHOOL
- CONSTRUCTION OF NEW TRACK AND PLAY STRUCTURES
- DEMO EXISTING MADRONA BUILDINGS
- PAVE STUDENT DROPOFF/PARENT PARKING
- PAVE BUS LOOP

PHASE 3B JUNE 2018-OCTOBER 2018
- COMPLETE CONSTRUCTION OF NEW PLAYFIELD

PHASING LEGEND

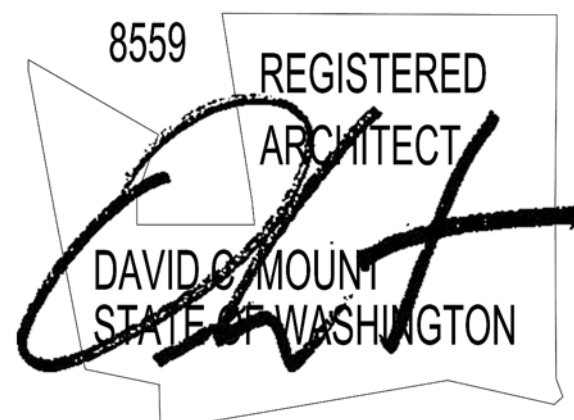


mahlum

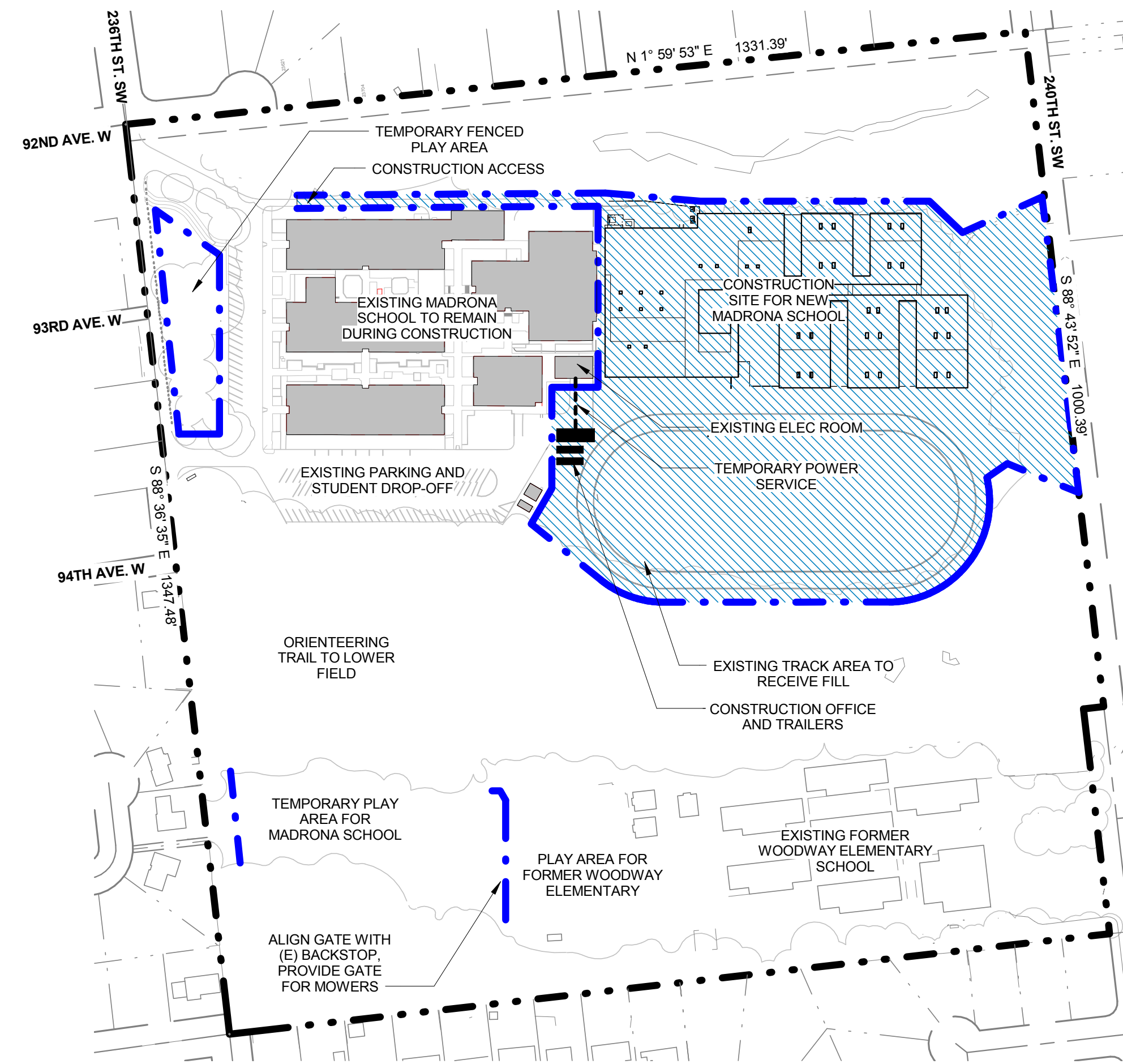
71 COLUMBIA | FLOOR 4
SEATTLE WA 98104
(206) 441-4151 OFFICE
(206) 441-0478 FAX

1231 NW HOYT | SUITE 102
PORTLAND OR 97209
(503) 224-4032 OFFICE
(503) 224-0918 FAX

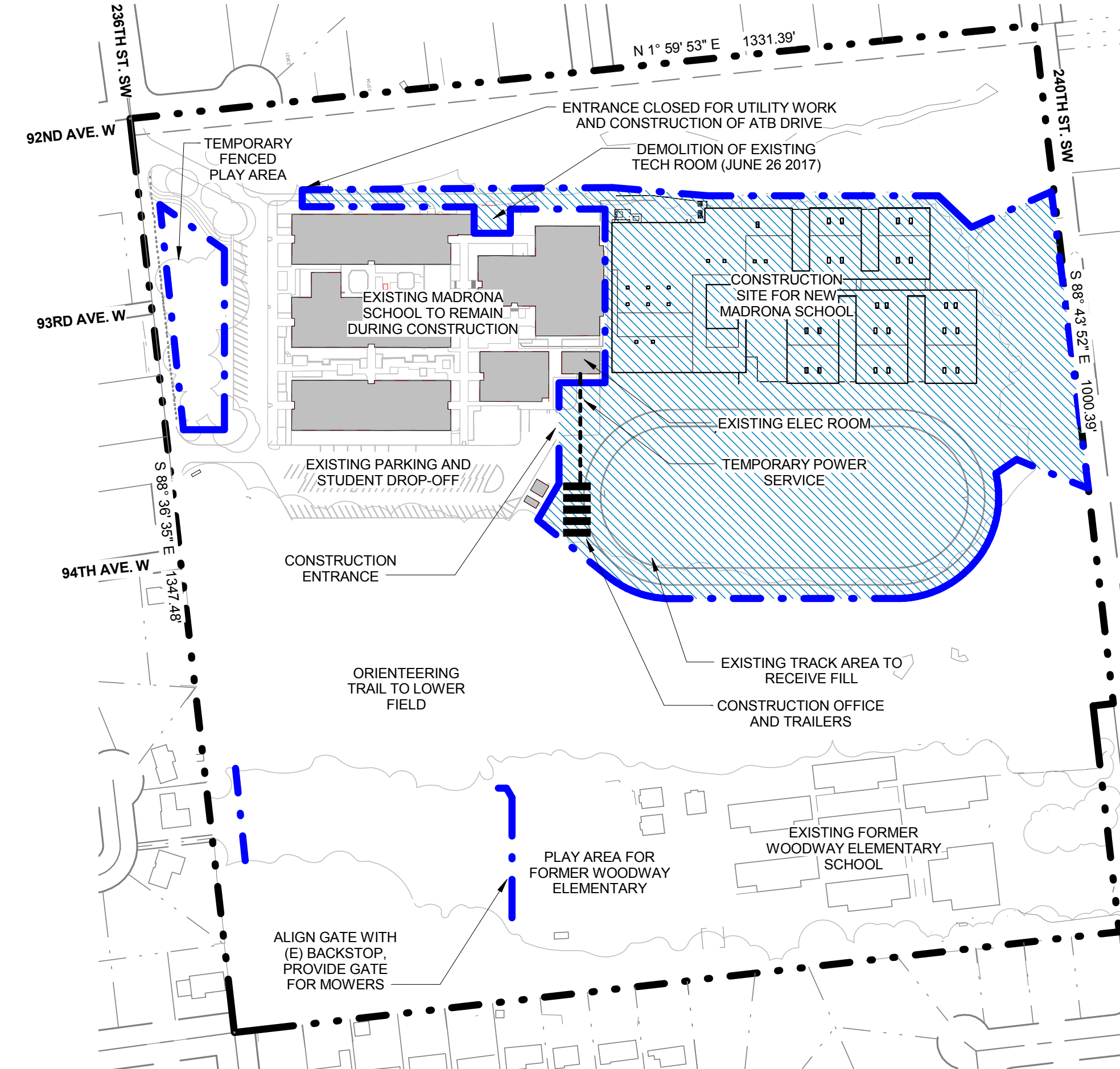
MAHLUM ARCHITECTS INC



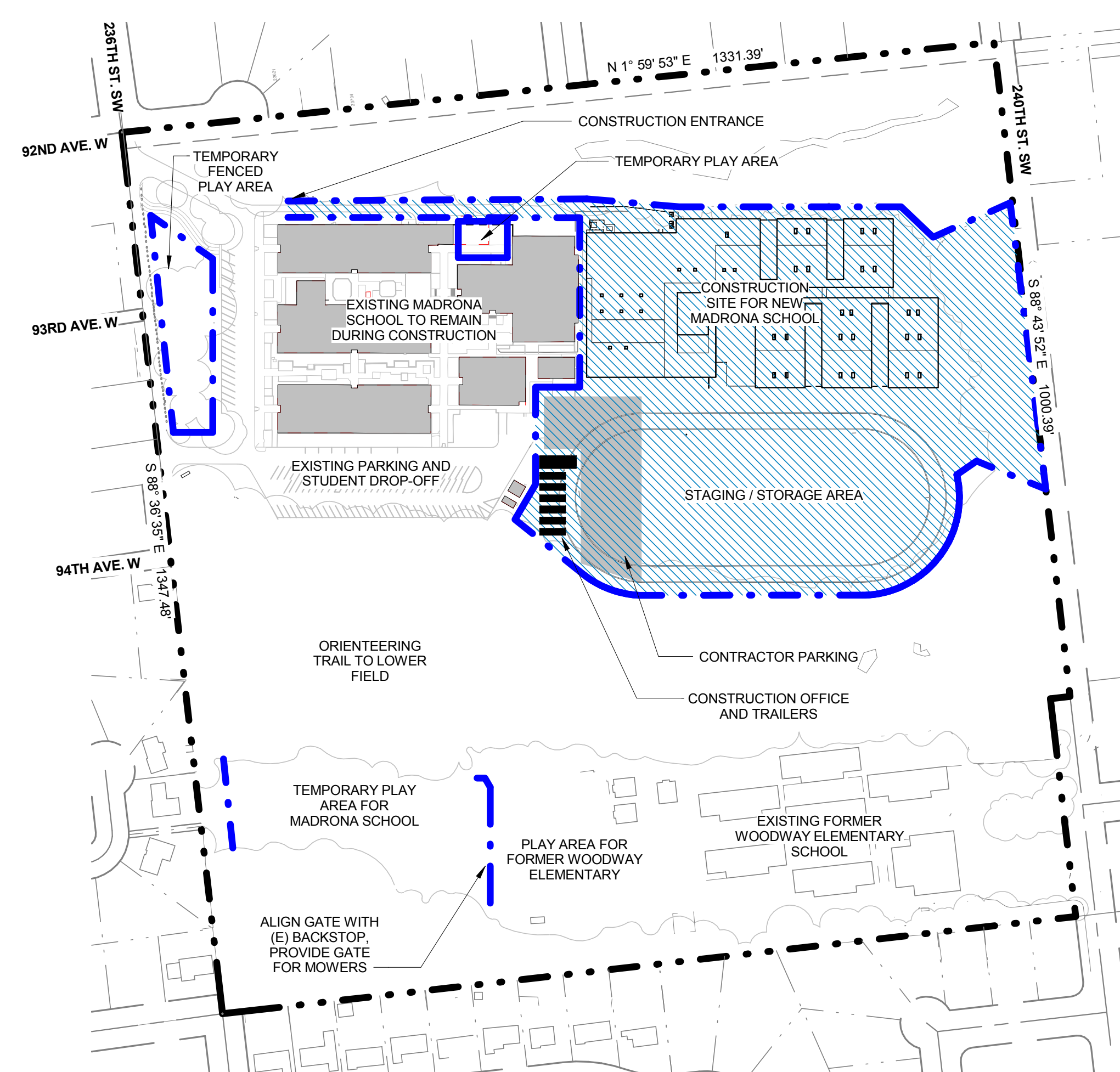
Edmonds
SCHOOL DISTRICT
Each student learning, every day!
MADRONA SCHOOL
REPLACEMENT
9300 236TH ST. SW,
EDMONDS, WA 98020



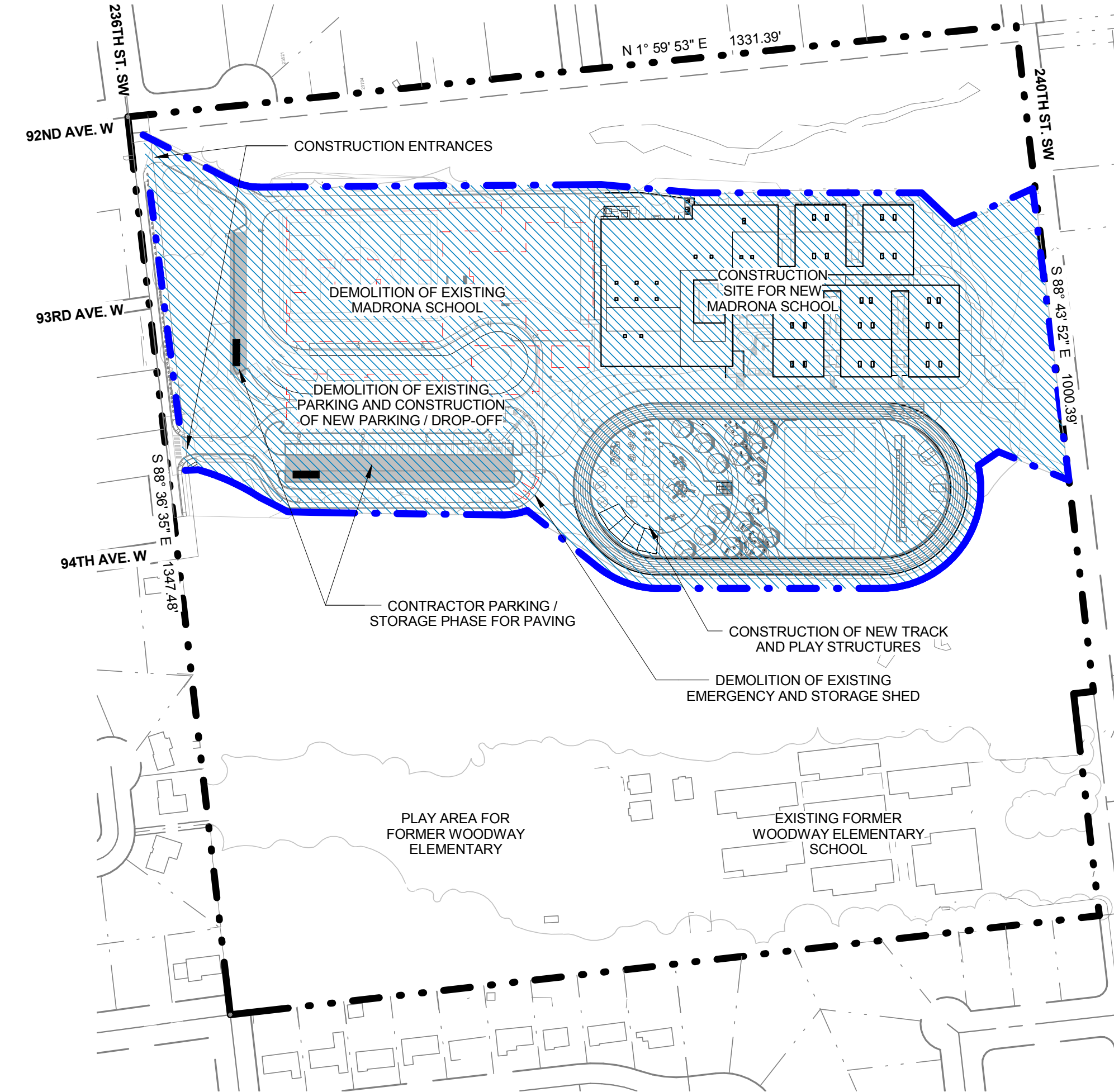
PHASE 1A (1 MAY 2017 - 25 JUNE 2017)
1" = 160'-0"



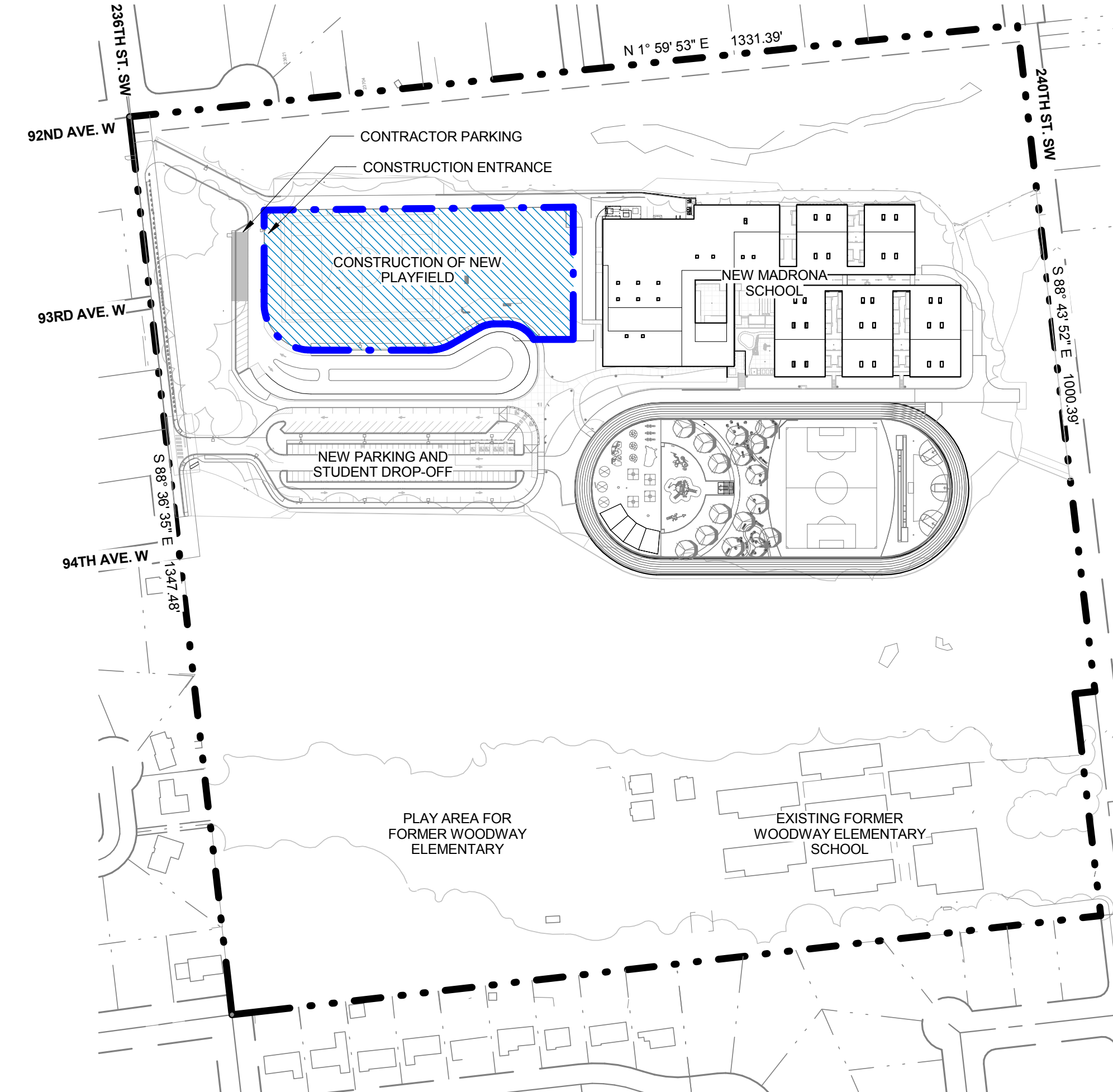
PHASE 1B (26 JUNE 2017 - 27 AUGUST 2017)
1" = 160'-0"



PHASE 2 (28 AUGUST 2017 - 24 JUNE 2018)
1" = 160'-0"



PHASE 3A (25 JUNE 2018 - AUGUST 2018)
1" = 160'-0"



PHASE 3B (AUGUST 2018 - OCTOBER 2018)
1" = 160'-0"

ZONE KEYPLAN

MARK	DATE	DESCRIPTION
------	------	-------------

ISSUE DATE:	01 MARCH 2017
ISSUE:	PHASE 1 BID SET

PROJECT NO.:	2015913.00
DRAWN BY:	BM/AD
CHECKED BY:	DM

PHASING PLAN DIAGRAMS

G-041

