



# ROYAL LEDGER

Lynnwood High School "Home of Royal Pride"

## 2008 Homecoming

### Calendar of Events

- Poster painting, October 6,8,14,16 (10<sup>th</sup>/11<sup>th</sup>), 7,9,13,15 (9<sup>th</sup>/12<sup>th</sup>) from 2-4pm
- Pep rally, October 23<sup>rd</sup> 7pm
- Coronation assembly, October 20<sup>th</sup>
- Pep assembly, October 24<sup>th</sup>
- Senior pants painting October 22<sup>nd</sup>, 6-8pm

### Homecoming – It's not just for our present students!!!

Dear Parent-

This year the LHS Homecoming will be held during the week of October 20<sup>th</sup>. It begins with our Coronation assembly and ends with a home football game (5:00 pm at the Stadium) and dance following on Friday night. Usually the game is well attended by our present students and parents, but the real purpose of Homecoming is to honor returning graduates. I know that many of you parents are also LHS Alumni. I encourage you to get a group of your classmates or team mates together and attend a Homecoming event. What better way to begin to say good bye to our building!! In addition to the game, there will be a pep rally on Thursday night at 700 pm. I'd be glad to give alumni a tour around the building on that evening. Consider this the first opportunity of this year to bid farewell to a place that gave you a ton of memories. I hope to see you at one of these events.

Dave Golden, Principal



### Lynnwood High School Instrumental Music Rummage Sale

Do you have old stuff you don't want anymore? A cluttered garage? Please consider donating items to the LHS Instrumental Music Rummage Sale.

**When: Donations will be accepted Tuesday 11/4, Wednesday 11/5, and Thursday 11/6 between 6 AM and 4 PM in the band room.**

**Questions – Email Amy Stevenson**  
StevensonA@edmonds.wednet.edu

**The sale will be Saturday, November 8 from 9 AM – 5 PM in the Lynnwood High School Commons.**

### REMEMBER . . . .

to periodically check on Skyward for any outstanding fees or fines and books that need to be returned.

### TEACHER CONTACT

You can contact your student's teacher by email or voice mail. Email addresses are [lastname-firstinitial@edmonds.wednet.edu](mailto:lastname-firstinitial@edmonds.wednet.edu). You can also access email addresses and voicemail on our website [www.edmonds.wednet.edu/lhs/](http://www.edmonds.wednet.edu/lhs/).

### Ensure your student has "fuel for learning"

#### Breakfast and lunch changes in store for 2008-09 school year

Please watch your mailbox this month for a letter from our district's Food Service Department pertaining to some important changes in the 2008-09 school year, including meal price increases, a change in our IOU policy, and qualifications for free and reduced-price meals. Details are included in the letter, but here is a brief summary.

#### Meal prices will increase

Just as the increase in food and fuel prices has likely impacted your family at home, it has also greatly affected our district's Food Service program. For the first time in five years, the price of breakfast and lunch must be increased. For middle and high schools they are now:

Breakfast:	Full cost: \$2.00 Free and Reduced: no charge to eligible families
Lunch:	Full cost: \$4.00 Reduced: 40 cents for grades 7-12 Free: no charge to eligible families
Milk:	50 cents

#### IOU \$10 limitation set

Students who go through the cafeteria line and do not bring money or have money in their account will receive a full breakfast or lunch until their balance reaches negative \$10. Students who owe more than \$10 and do not bring money to purchase their meal will receive either a muffin for breakfast or a cheese sandwich for lunch. Please help us ensure your child receives full meals by paying in advance.

#### Check to see if you qualify for free or reduced-price meals

Also included in the letter mailed to your home, and available online at [www.edmonds.wednet.edu](http://www.edmonds.wednet.edu), will be the qualification requirements for free and reduced-price meals and an application for the program. We encourage everyone who is eligible to allow their child to receive the benefit of this important nutrition program by sending in the application.

Questions about these changes? Please contact Sara Conroy, interim director of food service, at 425-431-7076 or Marla Miller, assistant superintendent, at 425-431-7036.

### GRADUATION REQUIREMENTS

Seniors must have 16 credits to be on track for graduation; Juniors must have 10 credits and Sophomores should have 5 credits. If your student is behind in credits, it is important to meet with his/her counselor and develop a plan of action. If summer courses were taken outside of the Edmonds School District, it is your responsibility to see that we have a transcript indicating credits earned.

# Your Parent Involvement *Supporting Student Success*



Your Loyal Royal Booster Club has been busy these last few weeks with...

- **Kicking off our fall raffle fundraiser**
- Presenting @ Freshmen Parent Info Night
- **Sponsoring the LHS Club/Sports Fair**
- Attending LHS alumni reunions with LRBC display
- **Selling pavers for the new high school**
- Attending Fall Sports Parent Info Night
- **Giving scholarships to dozens of LHS students for help with ASB cards, physicals, & insurance so they can participate in sports and clubs**
- Getting the LHS concession stand up and running for wrestling & basketball

Things coming up that we definitely need help with...

- **Inviting as many alumni as possible to homecoming. If you are one or know one please come or bring them to homecoming on Friday, Oct. 24 at 5 pm. There will be an adult only LRBC sponsored reception following at Billy McHale's with complimentary appetizers.**
- LRBC sponsored Homecoming School Social. We need help with serving ice cream, hot dogs and beverages as well as set/clean up on Monday, the 20th at the school.
- **Upcoming Spring Golf Tournament. Prize donations, sponsors, and plain old work by many hands is needed to make this a success.**
- Input at meetings. We meet every first Tuesday of the month at 7pm in the teacher's lounge. Please join us!

Contact me if you would like to get involved.

Kelley Reeves, [reevesjim@msn.com](mailto:reevesjim@msn.com)

## Booster Club

LRBC Membership Form 100% stays at the school!

Name \_\_\_\_\_ Phone \_\_\_\_\_  
Address \_\_\_\_\_ City \_\_\_\_\_ Zip \_\_\_\_\_  
Email \_\_\_\_\_  
Child's sport or activity for donation \_\_\_\_\_

Enclosed is my membership of \$25

Enclosed is my additional donation to the above team/club.

**Remember, if it's for the kids, the answer is YES!**

The Loyal Royal Booster Club Fall 2008 Raffle is here!

\$5 a ticket for 5 chances to win!

Prizes:

1st Prize - 42" Flat panel TV

2nd Prize - Wii Game system with accessories

3rd Prize - \$250 Gas Card

4th & 5th Prizes - \$100 Gas Card

Contact Kathi Ogle at 206 909-6711 for tickets

**Please put this form with payment in the LRBC box in the main office or mail to:**

LRBC

3001 184th Street SW

Lynnwood, WA 98037-4799

## Celebration!

### September

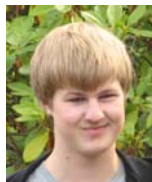
Taylor Nesheim

**GPA:** 3.99

**Culminating Project:** Writing grants to raise money for the Lynnwood Robotics Club

**Future Education:** Attend a four year university to get my Bachelor's degree in a field related to Science and Technology

**Future Career:** I plan to go into the field of Science and Technology



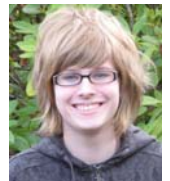
Halley Roberts

**GPA:** 3.85-4.0

**Culminating Project:** Drafting and writing five short stories

**Future Education:** University of Washington or Western Washington University

**Future Career:** High School English Teacher and writer



# Your Counselors' Corner

Supporting Student Success



**Fall is here!** Your students' classes are in full swing and we're excited about the year ahead. As we begin the new school year, we'd like to remind you who we are and how to contact us. Most email addresses for staff are [lastnameinitial@edmonds.wednet.edu](mailto:lastnameinitial@edmonds.wednet.edu). There are a few exceptions so if you think your email is not getting through, call us and check the address. **The Counseling Center can be reached at 425-431-7530.**

Our alpha caseload has changed a bit this year.

<u>Counselor</u>	<u>ALPHA</u>	<u>Email</u>
Larry Wilson	A - E	wilsonla@edmonds.wednet.edu
Brenda Zwahl	F - LI	zwahlb@edmonds.wednet.edu
LouAnn Apostolopoulos	Lm - Re	apostolopoulosl@edmonds.wednet.edu
Debbie McGahan	Rf - Z	mcgahand@edmonds.wednet.edu

## FRESHMEN:

Welcome to LHS!! If you have any questions or problems, come see us in the Counseling Center. We're here for you! Communicate with your teachers, ask for help, make use of tutorial. Remember, school starts at 7:00am!

## JUNIORS:

Mark your calendars that the PSAT will be held on Saturday, October 18, in the Lynnwood High School Commons. This is particularly important for Juniors, as it not only provides excellent practice for the SAT, but also serves as the National Merit Scholarship Qualifying Test (NMQST). Sophomores may also sign up to take the PSAT, but priority will be given to Juniors. Juniors may sign up to take the PSAT starting October 6<sup>th</sup>. The cost is \$13.00 and payment is taken in the Main Office. Checks should be made out to Edmonds School District.

## SENIORS:

This is your year! You should be thinking about your plans after graduation and how you are going to get there!

Four Year University Application Timeline – September/October

- Obtain application forms and observe application deadlines.
- Consider testing and/or re-testing (SAT I/SAT II/ACT).

Check out scholarship and financial aid information on the web.  
[www.fastweb.com](http://www.fastweb.com)   [www.scholarships.com](http://www.scholarships.com)   [www.finaid.org](http://www.finaid.org)  
[www.savingforcollege.com](http://www.savingforcollege.com)   [www.schoolsoup.com](http://www.schoolsoup.com)

Hello,

My name is Lisa Lester and I am the **Student Assistance Specialist here at Lynnwood High School**. My role consists of providing drug/alcohol intervention services, individual counseling and case management for those students who get in trouble for drug/alcohol related issues. I will also be providing group counseling, classroom presentations and will be advising TATU (Teens Against Tobacco Use) again this year.

If you ever have questions or concerns about possible drug/alcohol use by your student or anything else that you think I can help you with please don't hesitate to contact me at:

[lesterl@edmonds.wednet.edu](mailto:lesterl@edmonds.wednet.edu)

425.431.5251

Availability: Tues, Wed, Thurs from 8-3:30.

Lisa Lester. M.A.

## SOPHOMORES:

You made it through Freshman year! It's time to get focused and organized for your second year of high school. Join a club or a sport. No more excuses for not getting involved! Reach out and help our new Freshmen feel welcome.

**Are you going to a 4 year university?** Juniors should plan on taking the SAT or the ACT toward the end of their junior year. To prepare, students can make use of the sample questions that appear online at the test addresses below, there are prep books available at libraries, bookstores, and the LHS Career Center, and courses are available for a fee through EAN at [www.educationaccessnetwork.org](http://www.educationaccessnetwork.org). Free test prep is available at [www.number2.com](http://www.number2.com).

**SAT Test Dates/Deadlines:** Visit [www.collegeboard.com](http://www.collegeboard.com) for registration information

**ACT Test Dates/Deadlines:** Visit [www.act.org](http://www.act.org) for registration information

## Important Dates

October 8<sup>th</sup> – College Fair field trip to Everett Events Center, register in the Career Center

October 9<sup>th</sup> – Senior Night in the Library

## **1<sup>st</sup> SEMESTER PROGRESS REPORTS**

30 day report is mailed Oct. 20, -2008

60 day report is mailed Dec. 3, 2008

Final Semester grades are mailed Jan. 30<sup>th</sup>, 2009

## **October 8, 2008 Everett Events Center 2000 Hewitt Ave Everett, WA 98201**

- Over 100 exhibitors provide Career Exploration opportunities
- Emphasis on high demand/growth occupations
- Local and out-of-state college representatives
- \$500 Scholarship essay contest sponsored by Citibank

School Sponsored Field Trip: 9:00a – 12:00p

Bus Transportation Provided.

Register now in the Career Center – space is limited!

Open Session for Students, Parents & Community: 2:00p – 6:00p

Must Provide own Transportation



## **Career Center October updates:**

Career Center is open to all students and parents 6:30am – 3:00pm daily. Parents please call to make an appointment.

The LHS CC provides a number of resources from career & college planning, volunteer opportunities, scholarships, apprenticeship information, job search network, career units for all students, as well as an updated library.

## **Upcoming dates to note:**

Sept. 29<sup>th</sup> & 30<sup>th</sup> Senior Class Career Units

Oct. 8<sup>th</sup> Field Trip to Career & College Fair Everett Events Center

Oct. 9<sup>th</sup> Senior Parent Night LHS Library @ 7pm

**Please check the LHS Career Center Website for further information and events.**



**Lynnwood High School**

3001 184th Street Southwest  
Lynnwood, WA 98037  
Fax: 452-431-7527

Nonprofit Org.  
U.S. Postage  
PAID  
Lynnwood WA  
Permit No. 23

# LHS PTSA

*The Class of 2009 Parent Committee is offering a variety of ways to buy your ticket to this fun filled evening!* This is how it works. We have set the Class of 2009 graduation night party ticket @ **\$200.00** per student\*. You can choose to pay the ticket price in full or select one of the following:

**\* IF YOU PURCHASE YOUR TICKET PRIOR TO OCTOBER 20, 2008 YOU PAY ONLY \$150.00. IN ORDER TO GET THIS DISCOUNTED TICKET PRICE, YOU MUST PAY IN FULL.**

2 payments of \$100.00 each to be paid no later than **January 1, 2009**  
**(Price then increases to \$250.00)**

After Jan. 1, 2009: 1 payment of \$250.00, due no later than **April 1, 2009.**

You may choose to make **4 regular monthly payments** (Sept. – Dec. 2008 @ \$50.00 each month) the total would need to be **paid in full by January 1, 2009** When the price will increase to \$250.00

Please fill out the form, tear off at dotted line, and enclose **your check or money order made out to: LHS/PTSA** in the memo, please indicate student name.

**CLASS OF 2009 GRAD NIGHT VOUCHER**

Student Name:

\_\_\_\_\_ (Please Print)

Parent(s) Name:

Address: \_\_\_\_\_ City: \_\_\_\_\_

Zip: \_\_\_\_\_ e-mail: \_\_\_\_\_

Home Phone: \_\_\_\_\_ Cell Phone: \_\_\_\_\_

Circle Payment Option:      **A**      **B**      **C**

**Purchase by 10/20/08**  
(Payment in full of \$150.00)

**Make check or money order payable to LHS/PTSA**

**Mail to:** Lynnwood High School  
3001 184<sup>th</sup> St. SW  
Lynnwood, WA 98037-4701  
Attn: LHS/PTSA Class of 2009