

# EDMONDS SCHOOL DISTRICT CAPITAL IMPROVEMENTS TIMELINE

## FUNDING SOURCES

2004  
Capital  
Levy

2006 Capital  
Construction  
Bond

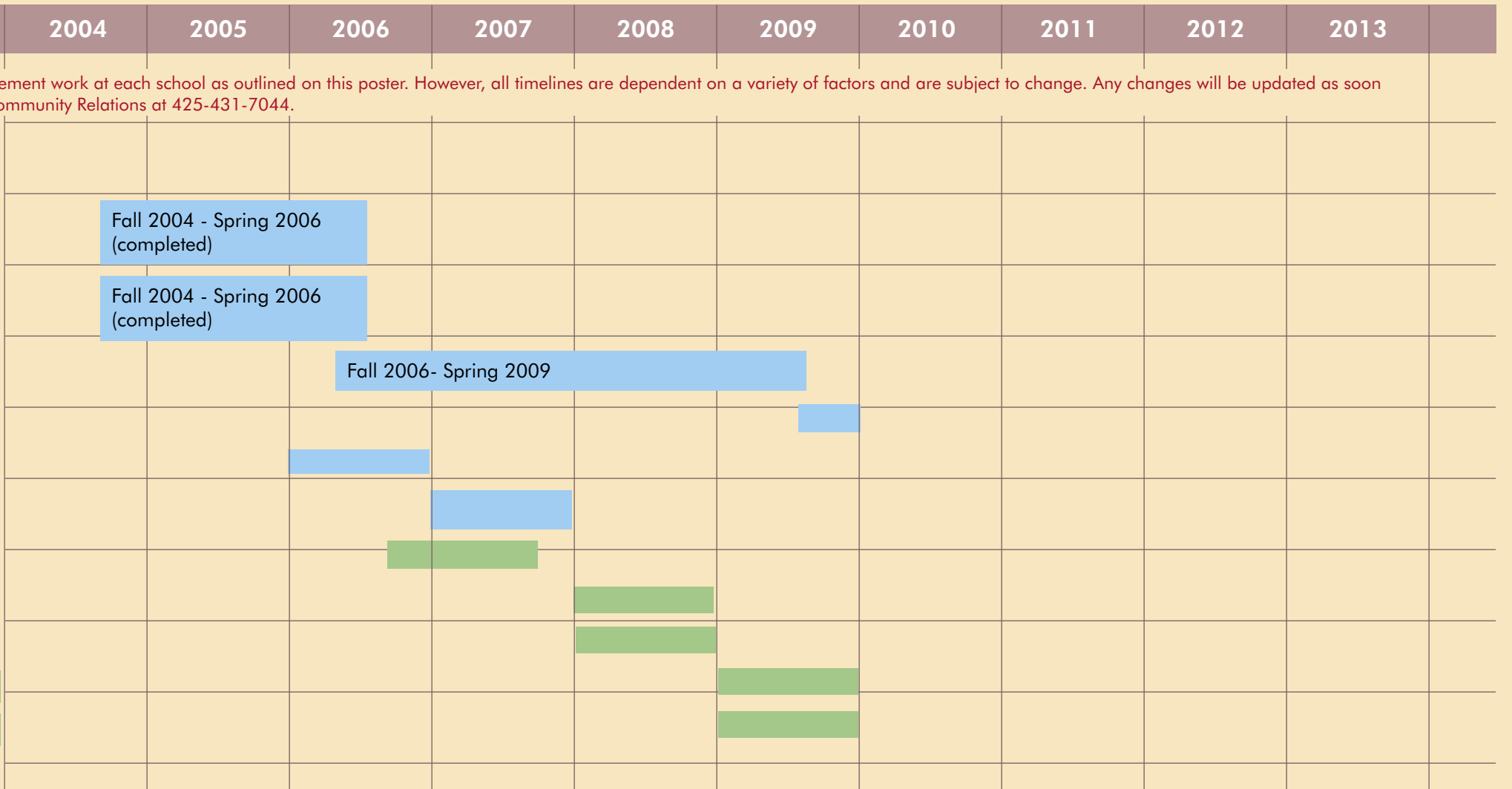
Ground-lease  
revenues  
& proceeds  
from surplus  
property sales

### OUR SCHOOL - BEVERLY ELEMENTARY \*

\* **Please note:** The Edmonds School District is committed to completing the capital improvement work at each school as outlined on this poster. However, all timelines are dependent on a variety of factors and are subject to change. Any changes will be updated as soon as possible on the District web site: [www.edmonds.wednet.edu](http://www.edmonds.wednet.edu). Questions? Please call Community Relations at 425-431-7044.

#### Technology

- Install a projector, document presenter, and instructional laptop in each classroom.
- Install mobile lab equipment
- Install additional computers in classrooms
- Earthquake safety upgrades
- Capital Partnership Program: playground feature
- Field improvements: backstop upgrade & drainage, irrigation, & turf renovation.
- Install emergency storage shelter
- Data cabling upgrade
- Replace HVAC system
- Remove moveable partition for stage
- Replace gym floor

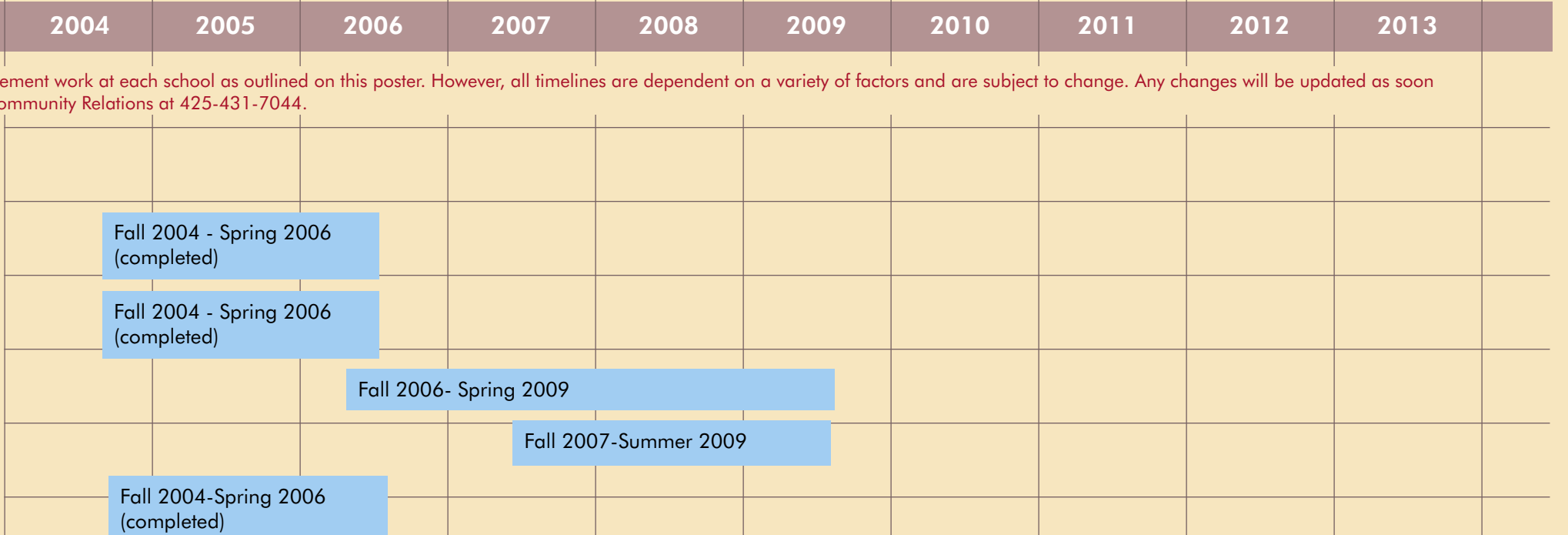


### DISTRICTWIDE PROJECTS\*

\* **Please note:** The Edmonds School District is committed to completing the capital improvement work at each school as outlined on this poster. However, all timelines are dependent on a variety of factors and are subject to change. Any changes will be updated as soon as possible on the District web site: [www.edmonds.wednet.edu](http://www.edmonds.wednet.edu). Questions? Please call Community Relations at 425-431-7044.

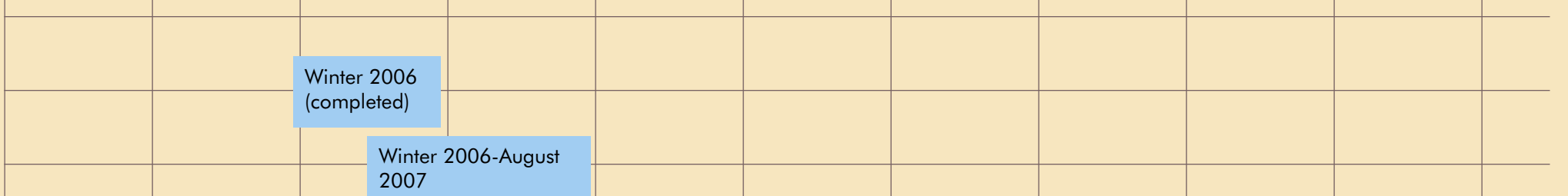
#### Technology DISTRICTWIDE: All schools; all classrooms

- Install a projector, document presenter, and instructional laptop in each classroom.
- Install mobile lab equipment
- Install additional computers in classrooms
- K-12 Student Reporting System
- Upgrade data cabling  
ELEMENTARY: Hazelwood. HIGH: Lynnwood, Mountlake Terrace



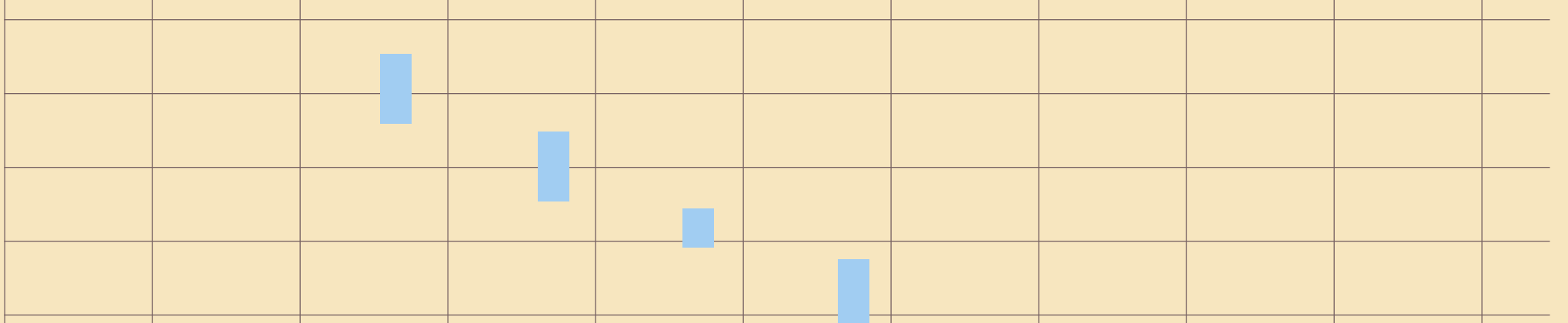
#### Science Lab Safety Upgrades

- MIDDLE: College Place, Meadowdale  
HIGH: Edmonds-Woodway, Lynnwood
- MIDDLE: Alderwood, Brier Terrace. HIGH: Meadowdale, Mountlake Terrace.  
OTHER: Madrona, Edmonds Homeschool Resource Center.



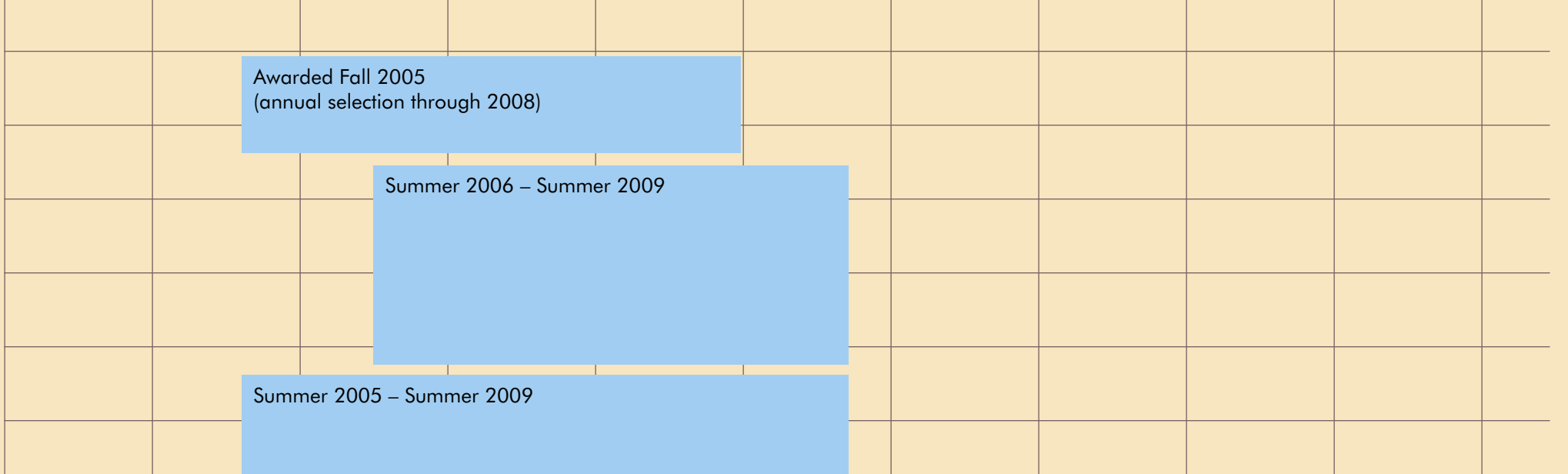
#### Earthquake Safety Upgrades

- ELEMENTARY: Brier, College Place, Edmonds, Hilltop, Lynnwood, Oak Heights, Sherwood, Woodway.
- ELEMENTARY: Spruce.  
MIDDLE: College Place.
- ELEMENTARY: Cedar Way, Mountlake Terrace.
- ELEMENTARY: Beverly, Evergreen, Hazelwood, Westgate.  
MIDDLE: Brier Terrace.



#### Field Improvements

- Capital Partnership Program:** ELEMENTARY: Beverly, Brier, Cedar Valley, Edmonds, Evergreen, Hazelwood, Lynndale, Lynnwood, Madrona, Meadowdale, Oak Heights.
- Backstop upgrade, asphalt, fencing, and drainage, irrigation, and turf renovation (all or some; varies by site):** ELEMENTARY: Beverly, Brier, Cedar Way, Cedar Valley, College Place, Edmonds, Evergreen, Hazelwood, Hilltop, Lynndale, Lynnwood, Madrona, Meadowdale, Oak Heights, Spruce, Westgate, Woodway. OTHER: Alderwood Early Childhood Center
- Athletic Facility Upgrades:** MIDDLE: Alderwood, Brier Terrace, College Place. HIGH: Edmonds-Woodway, Lynnwood, Meadowdale, Mountlake Terrace,



#### Lynnwood High School: Relocation and replacement at North Rd.

#### Meadowdale Middle School: Replacement

#### Capital Improvement Projects at Various Sites: Various projects specific to certain sites includes data cabling upgrades, replacing HVAC systems, parking lot traffic revisions, water piping replacements, etc ...

#### Emergency Storage Structures \*\*

- ELEMENTARY: Beverly, Brier, Cedar Valley, Cedar Way, Chase Lake, College Place, Evergreen, Hazelwood, Hilltop, Lynndale, Lynnwood, Madrona, Maplewood, Martha Lake, Meadowdale, Mountlake Terrace, Oak Heights, Seaview, Sherwood, Spruce, Terrace Park, Westgate, Woodway.
- MIDDLE: Alderwood, Brier Terrace, College Place, Meadowdale.
- HIGH: Edmonds-Woodway, Lynnwood, Meadowdale, Mountlake Terrace
- OTHER: Alderwood Early Childhood Center, Edmonds Homeschool Resource Center.

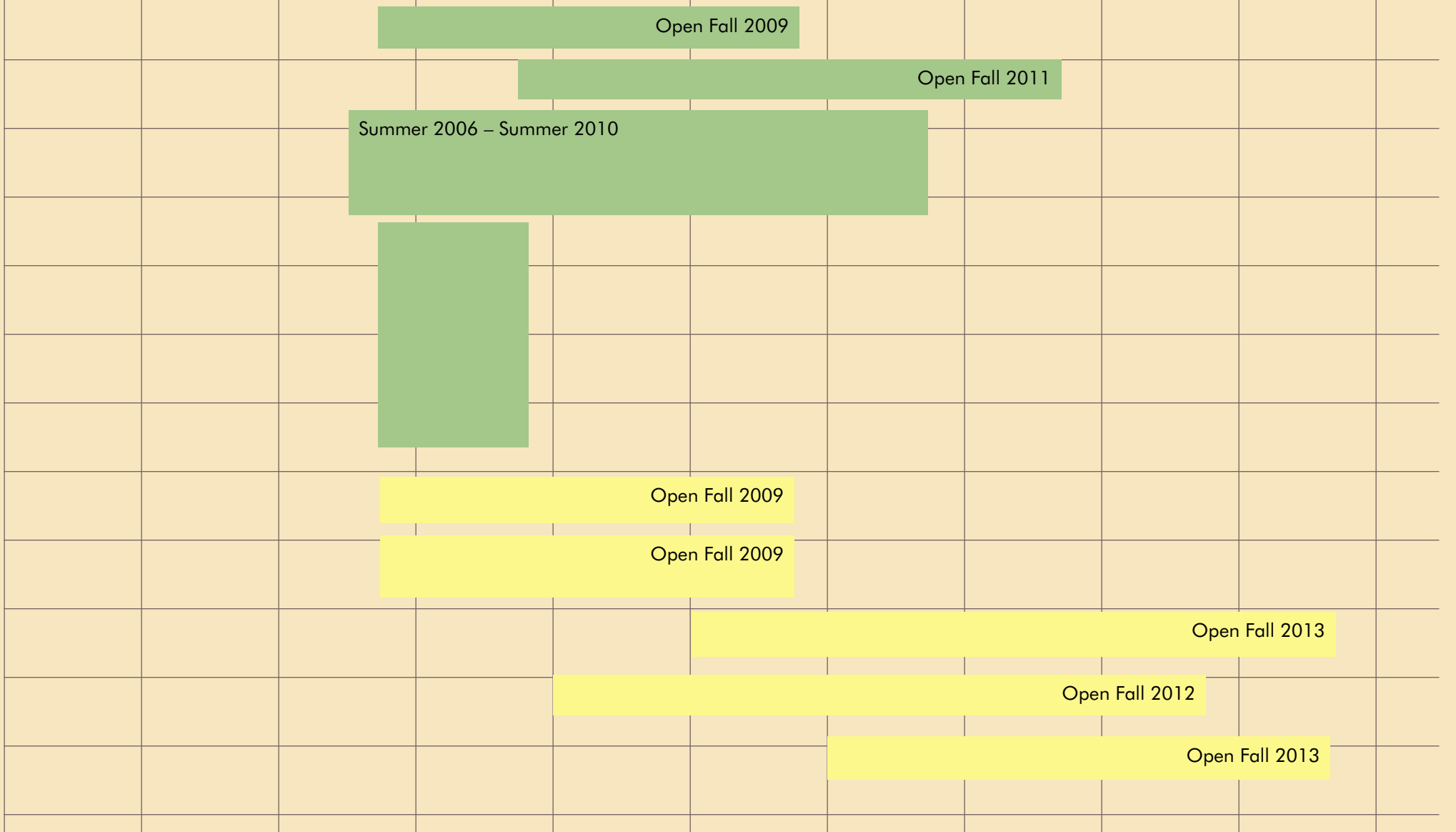
#### Alternative Learning Center: Scriber Lake High, Options, gr. 7-8 programs \*\*

#### District Support Center: Relocate and reconstruct Maintenance, Transportation, Warehouse and Education Services Center \*\*

#### Alderwood Middle School: Relocation and Replacement \*\*

#### Madrona K-8 School: Replacement \*\*

#### Lynndale Elementary: Replacement \*\*



\*\* Any project to be funded by revenue from the sale or lease